

VASCULAR AND/ OR INTERVENTIONAL RADIOLOGY

**104TH Scientific Assembly
and Annual Meeting**

Radiological Society of North America
McCormick Place, Chicago

November 25–30

Meeting.RSNA.org #RSNA18

RSNA[®] 2018
TOMORROW'S
RADIOLOGY TODAY 

Accreditation and Designation Statements

The Radiological Society of North America (RSNA®) is accredited by the Accreditation Council for Continuing Medical Education (ACCME) to provide continuing medical education for physicians.

The RSNA designates this live activity for a maximum of **99.25 AMA PRA Category 1 Credits™**. Physicians should claim only the credit commensurate with the extent of their participation in the activity.

The Commission on Accreditation of Medical Physics Education Program (CAMPEP) has approved the direct transfer of *AMA PRA Category 1 Credit™* to MPCEC on a credit-for-credit basis for medical physicists.

Corporate Symposium

Please refer to each course description in the online program to determine if CME credit is offered for the session.

Instructions on claiming credit will be provided during the course. CME credit for the Corporate Symposiums will be provided through a third party provider and not through RSNA.

Walk Through The Week

CME Learning Checkpoint

CME Learning Checkpoint Exhibit ED028 (Long-Term Complications of Renal Transplants: Interventional Management Techniques)

Session ED028 . . . CME Learning Checkpoint Community

SUNDAY, NOV 25, 2018

Case of the Day

Interventional Radiology Sunday Case of the Day

Session ED007-SU Case of Day, Learning Center

10:45 AM–12:15 PM

Scientific Papers Sessions

Vascular Interventional (Aortic and PAD)

Session SSA24 S502AB

Vascular Interventional (Chemo-Embolization and Radio-Embolization)

Session SSA25 S503AB

12:30–1:00 PM

Posters and Exhibits: Discussions

Vascular Interventional Sunday Poster Discussions

Session VIS-SUA VI Community, Learning Center

1:00–1:30 PM

Posters and Exhibits: Discussions

Vascular Interventional Sunday Poster Discussions

Session VIS-SUB VI Community, Learning Center

1:30–6:00 PM

Educational Courses

Interventional Oncology Series: Lung, Kidney and Bone

Course VSI011 S405AB

2:00–3:30 PM

Educational Courses

Update on Radionuclide Therapies

Course RC111 S505AB

CTA for TAVR and Other Aortic Valve Replacements

Course RC112 N230B

Interventional Course (Interactive Session)

Course RC114 S403A

CTA from Head to Toe

Course RC131 S503AB

4:00–5:45 PM**Plenary Sessions**

Sunday Afternoon Plenary Session

Session PS12 Arie Crown Theater**MONDAY, NOV 26, 2018****Case of the Day**

Interventional Radiology Monday Case of the Day

Session ED007-MO Case of Day, Learning Center**8:30–10:00 AM****Educational Courses**Evolving Imaging Methods for the Cancer Patient - Part 1
(Interactive Session)**Course MSAS21 S105AB**

MR Angiography: 2018 Update

Course RC212 E352Advances in CT: Technologies, Applications, Operations-
Special Purpose CT**Course RC221 S102CD**Targeted Treatment and Imaging of Liver Cancers: Basic to
Advanced Techniques in Minimally-Invasive Therapies and
Imaging**Course RC250 E261**

Carotid and Renal Doppler (Hands-on)

Course RC252 E264**8:30 AM–12:00 PM****Educational Courses**

Interventional Series: Embolotherapy

Course RC214 E350**10:30 AM–12:00 PM****Educational Courses**Australia and New Zealand Present: Clinical Radiology and
Radiation Oncology**Session SPCP21 E351****10:30 AM–12:00 PM****Scientific Papers Sessions**

Emergency Radiology (Thoracic, Cardiac and Vascular)

Session SSC04 S504AB

Vascular Interventional (Prostate and Uterine Embolization)

Session SSC15 E352

12:15–12:45 PM**Posters and Exhibits: Discussions**

Vascular Interventional Monday Poster Discussions

Session VIS-MOA VI Community, Learning Center**12:45–1:15 PM****Posters and Exhibits: Discussions**

Vascular Interventional Monday Poster Discussions

Session VIS-MOB VI Community, Learning Center**1:30–6:00 PM****Educational Courses**

Interventional Oncology Series: HCC and Cholangiocarcinoma

Course VSI021 S406B**3:00–4:00 PM****Scientific Papers Sessions**

Vascular Interventional (Education)

Session SSE26 S104A**TUESDAY, NOV 27, 2018****Case of the Day**

Interventional Radiology Tuesday Case of the Day

Session ED007-TU Case of Day, Learning Center**8:30–10:00 AM****Educational Courses**

Pulmonary Vascular Imaging

Course RC301 S104B

Tumor Ablation Beyond the Liver: Practical Techniques for Success

Course RC331 S404AB

Live Ultrasound Interventional Procedures: Thermal Ablation, Cyst Aspiration, Abscess Drainage, Vascular Access, Core Biopsy, Foreign Body Removal (Hands-on)

Course RC352 E264**8:30 AM–12:00 PM****Educational Courses**

Vascular Series: CT Angiography: New Techniques and Their Application

Course RC312 S502AB

Interventional Series: Venous Disease

Course RC314 E352

10:30 AM–12:00 PM**Scientific Papers Sessions**

Cardiac (Coronary Atherosclerosis)

Session SSG02 **S104B****12:15–12:45 PM****Posters and Exhibits: Discussions**

Vascular Interventional Tuesday Poster Discussions

Session VIS-TUA **VI Community, Learning Center****12:45–1:15 PM****Posters and Exhibits: Discussions**

Vascular Interventional Tuesday Poster Discussions

Session VIS-TUB **VI Community, Learning Center****1:30–6:00 PM****Educational Courses**

Interventional Oncology Series: Basic Science and Imaging

Course VSIO31 **S405AB****2:00–3:30 PM****Corporate Symposium**

Ultrasound Enhancing Agent Use in the Clinical Setting: An Up-to-date Overview for Your Clinical Practice: Presented by Northwest Imaging Forums, educational grant provided by Bracco Diagnostics, Inc.

Session CS36 **S105D****3:00–4:00 PM****Scientific Papers Sessions**

Vascular Interventional (Dialysis and Venous Intervention (Including IO))

Session SSJ25 **S503AB**

Vascular Interventional (Spine and Bone Intervention)

Session SSJ26 **S502AB****4:30–6:00 PM****Educational Courses**

Emergency Ultrasound Pitfalls

Course RC408 **S102CD**

Peripheral Artery Disease: CTA and MRA

Course RC412 **N230B**

Morbidity and Mortality

Course RC414 **E353A**

Making Patients and Staff Safer in Interventional Procedures

Course RC423 **S403A**

The New Standard of Care of Large Vessel Stroke is Endovascular: Is Your Radiology Practice Ready?

Course RC431 **S103CD**

WEDNESDAY, NOV 28, 2018

Case of the Day

Interventional Radiology Wednesday Case of the Day

Session ED007-WE Case of Day, Learning Center

8:30–10:00 AM

Educational Courses

Case-based Review of Pediatric Radiology (Interactive Session)

Course MSCP41 E450B

Optimization and Technology in Interventional Radiology

Course RC523 S403B

Vertebral Augmentation (Hands-on)

Course RC550 E260

8:30 AM–12:00 PM

Educational Courses

Vascular Series: MR Angiography: New Techniques and Their Application

Course RC512 S503AB

Interventional Series: Peripheral and Visceral Occlusive Disease

Course RC514 S105AB

10:30 AM–12:00 PM

Scientific Papers Sessions

Cardiac (Valves Imaging and Intervention)

Session SSK04 S103AB

Vascular Interventional (Ablation)

Session SSK20 E353A

12:15–12:45 PM

Posters and Exhibits: Discussions

Vascular Interventional Wednesday Poster Discussions

Session VIS-WEA VI Community, Learning Center

12:45–1:15 PM

Posters and Exhibits: Discussions

Vascular Interventional Wednesday Poster Discussions

Session VIS-WEB VI Community, Learning Center

1:30–6:00 PM

Educational Courses

Interventional Oncology Series: Colon and Neuroendocrine Liver Mets

Course VSI041 S405AB

1:30–3:00 PM**Educational Courses**

RSNA/ESR Sports Imaging Symposium: Musculoskeletal
Interventional Procedures

Session MSSR43. **E352**

3:00–4:00 PM**Scientific Papers Sessions**

Chest (Vascular/Interventional)

Session SSM05. **S404CD**

Pediatrics (Interventional Radiology)

Session SSM20. **E260**

Vascular Interventional (Neurovascular Interventions)

Session SSM23. **E263**

Vascular Interventional (Portal Interventions)

Session SSM24. **E264**

4:30–6:00 PM**Educational Courses**

Controversy Session: CTA or MRA?

Session SPSC45. **E353A**

THURSDAY, NOV 29, 2018**Case of the Day**

Interventional Radiology Thursday Case of the Day

Session ED007-TH **Case of Day, Learning Center**

7:15–8:15 AM**Educational Courses**

Controversy Session: In Stenotic Vascular Disease, Diameter
Stenosis is All that Matters

Session SPSC50. **E350**

8:30–10:00 AM**Educational Courses**

Cardiac Imaging for Transcatheter Intervention Planning

Course RC603. **S103CD**

Diseases of the Thoraco-abdominal Aorta

Course RC612 **S503AB**

Common Spinal Injection Procedures for Diagnosis and
Treatment of Back Pain (Hands-on)

Course RC631 **E263**

Fallopian Tube Catheterization (Hands-on)

Course RC650. **E260**

Live Ultrasound Interventional Procedures: Joint Injections,
Cyst Aspiration, Abscess Drainage, Vascular Access, Core
Biopsy, and Foreign Body Removal (Hands-on)

Course RC652. **E264**

8:30 AM–12:00 PM

Educational Courses

Musculoskeletal Series: Musculoskeletal Interventions

Course RC604 E353C

Interventional Series: Non-Vascular Interventions

Course RC614 N227B

10:30 AM–12:00 PM

Scientific Papers Sessions

Cardiac (Great Vessels and Cardiopulmonary Disease)

Session SSQ02 S404AB

Neuroradiology (Cervicocranial Vascular Imaging)

Session SSQ16 S504AB

Vascular Interventional (Non-Vascular Interventions)

Session SSQ20 S403A

Vascular Interventional (Liver Cancer Interventionist)

Session SSQ21 S403B

12:15–12:45 PM

Posters and Exhibits: Discussions

Vascular Interventional Thursday Poster Discussions

Session VIS-THA VI Community, Learning Center

12:45–1:15 PM

Posters and Exhibits: Discussions

Vascular Interventional Thursday Poster Discussions

Session VIS-THB VI Community, Learning Center

1:30–6:00 PM

Educational Courses

Interventional Oncology Series: IO Practice and Clinical Trials

Course VSI051 S405AB

1:30–3:00 PM

Educational Courses

Case-based Review of Ultrasound (Interactive Session)

Course MSCU51 E450B

3:00–4:00 PM

Educational Courses

Peds, IR, Potpourri (Case-based Competition)

Session SPDL51 E451B

Hot Topic Session: Prostatic Artery Embolization for
Primetime

Session SPSH55 S402AB

3:30–5:00 PM**Educational Courses**

Case-based Review of Ultrasound (Interactive Session)

Course MSCU52 **E450B****4:30–6:00 PM****Educational Courses**

Vascular Ultrasound and Doppler

Course RC710 **N226**

Thoracic Aortic Emergencies (Interactive Session)

Course RC712 **S103AB**

Dialysis Interventions

Course RC714 **E353A**

Image-guided Biopsy of the Spine (Hands-on)

Course RC731 **E263**Transpositions of the Great Arteries in Your Hands
(Hands-on)**Course RCB55** **S401CD****FRIDAY, NOV 30, 2018****8:30 AM–12:00 PM****Educational Courses**

Interventional Series: Reproductive Health Interventions

Course RC814 **E451B****8:30–10:00 AM****Educational Courses**

MR Imaging in the Thorax

Course RC803 **E353C****Posters and Exhibits
Discussions***(CME is available when the author is present for discussion
during the lunch period)***SUNDAY, NOV 25, 2018****12:30–1:00 PM****Scientific Posters**Citation Analysis of Interventional Radiology Articles: General
Radiology Journals vs. a Dedicated Interventional Radiology
Journal**VI201-SD-SUA2** **Station #2**

Does RFA Treatment Induce Neoplastic Changes in Benign Thyroid Nodules: A Preliminary Study

VI205-SD-SUA6 Station #6

Injection System and Navigation of Magnetic Microbeads Using MRI Gradients

VI203-SD-SUA4 Station #4

No Inferiority of Tonbridge Thrombectomy Device for Acute Thrombus Retrial Compared with Solitaire Device: An Experimental Evaluation Study

VI204-SD-SUA5 Station #5

Significant Importance of Novel Direct Eye Dosimeter and Protective Lead Devices for Complying with ICRP Recommended Limit for the Eye Lens in Transarterial Chemoembolization for HCC

VI200-SD-SUA1 Station #1

The ALARA Principle in CT Guided Intervention

VI202-SD-SUA3 Station #3

12:30–1:00 PM

Education Exhibits

Ablative Treatment in Renal Tumors: Complications and How to Avoid Them

VI152-ED-SUA8. Station #8

Case-Based Pictorial Review of Vascular Plug-Assisted Retrograde Transvenous Obliteration (PARTO) for Bleeding Gastric Varices: A Feasible Alternative to BRTO?

VI006-EB-SUA Hardcopy Backboard

How to Treat Angiographically Occult Hepatocellular Carinoma with Ultraslective Conventional Transarterial Chemoembolization?

VI151-ED-SUA7 Station #7

1:00–1:30 PM

Scientific Posters

A Multiple Combined Approach (Ablation, Consolidation and Radiotherapy) in the Management of Painful and Osteolytic Metastases of the Spine Only: Experience of a Single Center

VI210-SD-SUB5 Station #5

Effective Dose Management Using Fluoroscopy Save Technique for DSA (Digital Subtraction Angiography)

VI208-SD-SUB3 Station #3

Establishing Expected PET/CT Imaging Response Following Radioembolization for Breast Cancer Liver Metastases

VI209-SD-SUB4 Station #4

EZ-Access: A Novel 3D Printed Groin Puncture Device

VI211-SD-SUB6. Station #6

Ovarian Function Following Uterine Artery Embolization or Surgery for Symptomatic Uterine Fibroids: A Meta-Analysis

VI206-SD-SUB1 Station #1

Selective Penile Arterial Embolization Does Not Affect Long-Term Erectile Function in Patients with High-Flow Priapism: An 18-Year Experience

VI207-SD-SUB2 Station #2

1:00–1:30 PM

Education Exhibits

Contrast-Enhanced Ultrasound for Carotid Artery Plaque: How to Do It

VI155-ED-SUB9 Station #9

Cryoablation of Large Tumors: Techniques, Tips, and Risks

VI154-ED-SUB8 Station #8

Pelvic Trauma: What to Know

VI153-ED-SUB7 Station #7

MONDAY, NOV 26, 2018

12:15–12:45 PM

Scientific Posters

Clinical Impact of Bone Biopsy on Treating Osteomyelitis of the Foot: A Single Tertiary Institution Experience

VI213-SD-MOA2 Station #2

Intrahepatic Cholangiocarcinoma: Treatment Approaches and Survival Trends for Surgically Ineligible Patients

VI218-SD-MOA7 Station #7

Intraprocedural FDG Perfusion PET During PET/CT Guided Liver Tumor Ablation for Assessment of the Ablation Margin

VI212-SD-MOA1 Station #1

Notions of Pre-Procedural Anxiety in the Realm of Interventional Radiology

VI216-SD-MOA5 Station #5

Prostate Artery Embolization: How Does Additional Cone-Beam-CT Influence the Procedure

VI217-SD-MOA6 Station #6

TIPS in Cirrhotic in Patients with Complications of Portal Hypertension: A Single-Centre Preliminary Experience Using a New Controlled-Expansion e-PTFE Covered Stent

VI214-SD-MOA3 Station #3

Transvaginal Pelvic Interventions: A Road Less Traveled

VI215-SD-MOA4 Station #4

12:15–12:45 PM

Education Exhibits

Beyond the Basics of Prostatic Artery Embolization (PAE):
Controversies, Managing Complex Anatomy, and Keys to
Successful Practice Building

VI156-ED-MOA8 Station #8

Optical Coherence Tomography: A Practical Primer for the
Radiologist

VI158-ED-MOA10 Station #10

12:45–1:15 PM

Scientific Posters

Clinical Impact of Collateral Circulation in Patients with Median
Arcuate Ligament Syndrome

VI219-SD-MOB1 Station #1

Cost Efficiency of Lung Biopsy Tract Collagen Solution
Injection (BTCI)

VI224-SD-MOB6 Station #6

Endovascular Uterine Artery Embolization in Symptomatic
Leiomyomas: A Single Center Experience

VI222-SD-MOB4 Station #4

Inconclusive Computed Tomography Angiography for
Pulmonary Embolism: The Importance of Significant Venous
Compression in the Thoracic Outlet

VI220-SD-MOB2 Station #2

Locoregional Treatments for Unresectable Early Stage HCC in
Patients with High Risk for Intraprocedural Bleeding: Is
Single-Step Combined Therapy Safe and Feasible?

VI223-SD-MOB5 Station #5

Radiopaque 3D Printed Phantoms for Simulation and
Development of CT-Guided Procedures

VI221-SD-MOB3 Station #3

12:45–1:15 PM

Education Exhibits

Emergency with a Birth Canal Injury Due to Vaginal Delivery?
Interventional Radiology Will Save Your Patient - Usefulness of
Embolization for Birth Canal Injury in Vaginal Delivery

VI007-EB-MOB Hardcopy Backboard

Flowing Through Time and Space

VI159-ED-MOB7 Station #7

This is Glue, Strong Stuff: Non-Vascular Applications of
N-butyl-2-cyanoacrylate (NBCA) and Review of Technique

VI160-ED-MOB9 Station #9

TUESDAY, NOV 27, 2018

12:15–12:45 PM

Scientific Posters

CT Angiography of Entire Aorta with 30ml Contrast Medium
Volume at 70kVp: Comparison with a Standard Protocol

VI231-SD-TUA7 Station #7

Differential Diagnosis of Bland and Neoplastic Portal Vein
Thrombosis with Dual Energy Spectral CT

VI230-SD-TUA6 Station #6

Incidence of Post-Biopsy Arteriovenous Fistula in Native and
Transplant Kidneys

VI227-SD-TUA3 Station #3

Increased Hepatic Metastatic Growth following
Radiofrequency Ablation

VI228-SD-TUA4 Station #4

O2-O3 Chemiodyscolysis and O2-O3 Retreatment: A
Retrospective Outcome Evaluation of Different Multiple-
Treatment Sessions in Partially-Responder Patients

VI232-SD-TUA8 Station #8

The Applications of Time Resolved Imaging of Contrast
Kinetics (TRICKS) in the Assessment of the Proximal Venous
System of Dialysis Patients

VI226-SD-TUA2 Station #2

Transarterial Chemoperfusion (TACP) and Transvenous
Pulmonary Chemoembolization (TPCE) for the Treatment of
Primary Lung Cancer

VI229-SD-TUA5 Station #5

Tumescence Anesthesia Solution-Assisted Laser Ablation
Treatment of Lower Limb Varicose Veins: Effect of
Temperature of Tumescence Anesthesia Solution on
Intraoperative and Postoperative Pain, Clinical Observations,
and Nursing Care

VI225-SD-TUA1 Station #1

12:15–12:45 PM

Education Exhibits

A Novel Approach to Sedation Management for Interventional
Radiology Procedures-Utility of Dexmedetomidine

VI163-ED-TUA11 Station #11

Line of Sight: Multi-Modality Techniques for Challenging
Tissue Biopsies

VI161-ED-TUA9 Station #9

Management of Classic Budd-Chiari Syndrome and Hepatic
Vena Cava Budd-Chiari Syndrome (HVC-BCS): A Pictorial
Review

VI162-ED-TUA10 Station #10

12:45–1:15 PM

Scientific Posters

Analyzing the Costs of Mechanical Thrombectomy in Acute Stroke in Our Reference Center over a Population of 390,000 Inhabitants

VI235-SD-TUB3 Station #3

Application Value of 4D CT Angiography in Spinal Artery Imaging

VI234-SD-TUB2 Station #2

Common Femoral Vein Lumen Area on MR Venography Changes with Patient Position and Hydration Status

VI236-SD-TUB4 Station #4

Novel Needle Based Sensors for Guiding Tissue Biopsies

VI239-SD-TUB7 Station #7

Preliminary Study of US-PET Fusion Virtual Navigation in Ultrasound-Guided Biopsy

VI238-SD-TUB6 Station #6

Single-Center Experience of IVC Filter Placement and Retrieval Practice Patterns

VI240-SD-TUB8 Station #8

Spectral CT Angiography Demonstration of the Lateral Circumflex Femoral Artery Descending Branch for Anterolateral Thigh Flap: Comparison of Monochromatic and Polychromatic Imaging

VI237-SD-TUB5 Station #5

The Early Evaluation of Carotid Arterial Elasticity in Patients with Prediabetes Using Pulse Wave Velocity by Ultrafast Imaging

VI233-SD-TUB1 Station #1

12:45–1:15 PM

Education Exhibits

Let It Flow: Endovascular Management of Vascular Complications Post-Liver Transplant

VI165-ED-TUB10 Station #10

Radiofrequency Ablation for Thyroid Nodules: Current Evidences and Future Perspectives

VI164-ED-TUB9 Station #9

What Should Diagnostic Radiologists Know About Endoscopic Ultrasound-Guided Biliary Intervention?

VI175-ED-TUB11 Station #11

WEDNESDAY, NOV 28, 2018

12:15–12:45 PM

Scientific Posters

Assessing Lag Time after CTA in the Diagnosis of Acute Lower Gastrointestinal Bleed on Catheter Angiography: Towards Improving Yield

VI242-SD-WEA2 Station #2

Carotid Occlusions in the Setting of Acute Stroke

VI247-SD-WEA7 Station #7

CEUS Monitoring of Intratumoral Microcirculation After Electroporation of Liver Tumors

VI243-SD-WEA3 Station #3

Mid-Term Result of Thoracic Endovascular Aortic Repair in Octogenarians and Nonagenarians

VI245-SD-WEA5 Station #5

MR Lymphography in Patients with Lymphedema: Does Compression Therapy Increase False Negative Cases?

VI241-SD-WEA1 Station #1

Psoas Muscle Density in Combination with Model of End-Stage Liver Disease Score Can Improve Survival Predictability Following Transjugular Intrahepatic Portosystemic Shunt

VI246-SD-WEA6 Station #6

Risk Assessment of Chronic Kidney Diseases Following Thermal Ablation: Comparative Assessment of Radiofrequency, Cryo-and Microwave Ablation for T1a Renal Masses

VI249-SD-WEA9 Station #9

Simultaneous Noncontrast Angiography and IntraPlaque Hemorrhage (SNAP) Imaging for Cervical Artery Dissections

VI244-SD-WEA4 Station #4

The Effects of miR-34a on the Function of Human Colon Cancer Cell SW480 and Growth of Subcutaneous Xenograft Tumor

VI248-SD-WEA8 Station #8

12:15–12:45 PM

Education Exhibits

The Essentials of Prostatic Artery Embolization (PAE): A Beginners' Guide and Laying the Foundation for Success

VI166-ED-WEA10 Station #10

Tools for "Superactive Surveillance" for Local Focal Ablation of Low Grade Prostate Cancer

VI168-ED-WEA12 Station #12

Vascular Intervention for Aortic Dissection –What Should Radiologists Know When Making a Decision About the Optimal Treatment?

VI167-ED-WEA11 Station #11

12:45–1:15 PM

Scientific Posters

A Study on Microwave Ablation Technique Using a Newly Developed Microwave Surgical Instrument. in Vivo Study in a Rabbit Liver Model

VI250-SD-WEB1 Station #1

Analyzing the Effectiveness of Pericardial Drain Size on Short Term Complications and Recurrence as a Palliative Care Option for the Treatment of Symptomatic Pericardial Effusion

VI252-SD-WEB3 Station #3

Frequency and CTA-based Volumetric Analysis of Endoleaks after Fenestrated Endovascular Aortic Aneurysm Repair (FEVAR) using Custom and Off-the-Shelf Devices

VI257-SD-WEB8 Station #8

Not All M2 Branches are Alike: Failure of Frontal Division Recanalization Utilizing Mechanical Thrombectomy

VI256-SD-WEB7 Station #7

Percutaneous Vesselplasty in Osteolytic Primary or Secondary Vertebral Lesions After the Radiofrequency Ablation: A Safe and Effective Technique

VI251-SD-WEB2 Station #2

Preoperative Endoscopic versus Percutaneous Biliary Stent Placement for Obstructive Jaundice before Pancreatectomy: An Analysis of the National Surgical Quality Improvement Program

VI253-SD-WEB4 Station #4

Radiofrequency Versus Microwave Liver Ablation. Preliminary Results of a Randomized Clinical Trial

VI258-SD-WEB9 Station #9

Safety of Combining Everolimus with Transarterial Embolization in Patients with Metastatic Neuroendocrine Tumor to the Liver

VI255-SD-WEB6 Station #6

The Diagnostic Value of Noncontrast-Enhanced ECG-Gating Quiescent-Interval Single-Shot (QISS) MR Angiography in Lower Extremity Peripheral Arterial Disease

VI254-SD-WEB5 Station #5

12:45–1:15 PM

Education Exhibits

Clinical Applications of Dynamic Density Optimization (DDO) in Body Digital Angiography: What the Radiologist Needs to Know

VI170-ED-WEB11 Station #11

Portomesenteric Venous Complications After Pancreatic Surgery with Venous Reconstruction: Imaging and Interventional Therapies

VI169-ED-WEB10. Station #10

THURSDAY, NOV 29, 2018

12:15–12:45 PM

Scientific Posters

“Dark Blood” Dual-Energy CT Imaging Using a Dedicated Material Decomposition Method

VI262-SD-THA4 Station #4

Does Transfusion of Fresh Frozen Plasma Decrease the Rate of Paracentesis Related Hemorrhagic Complications in Coagulopathic Patients?

VI259-SD-THA1. Station #1

Multifunctional Embolic Beads Development for Image-Guided Transarterial Embolization

VI264-SD-THA6 Station #6

Patterns of Regional Lymph Node Recurrence After Definitive Radiotherapy for Cervical Cancer Patients

VI260-SD-THA2 Station #2

Reduction in the Efficacy of Irreversible Electroporation for the Ablation of Colorectal Liver Metastases in the Presence of Metallic Objects Can Be Modeled with Computer Simulations

VI265-SD-THA7 Station #7

Super Flexible Metallic Stents Insertion for the Management of Malignant Tortuous Hepatic or Splenic Flexure Colonic Obstruction

VI263-SD-THA5 Station #5

Surgery, Medicine, or Transitional Year? Comparison of Internship Year for Those Going Into Interventional Radiology with Retrospective Analysis of the RFS Survey of Trainees

VI261-SD-THA3. Station #3

12:15–12:45 PM

Education Exhibits

Biopsy Request? Not so Fast, It's a Pseudomass! Common and Uncommon Mimickers of Disease in the Abdomen and Pelvis

VI172-ED-THA9. Station #9

Neck Magnetic Resonance Angiography for Determination of Neointimal Coverage of the Stenting Site After Carotid Artery Stenting

VI171-ED-THA8 Station #8

12:45–1:15 PM

Scientific Posters

Analysis of Imaging Features of Bone Changes With The Chylous Reflux Lymphedema

VI272-SD-THB7 Station #7

Differences in Adherence and Reported Occupational Dose For One- versus Two-Badge Monitoring Protocols Among Medical Staff Performing or Assisting with Fluoroscopically-

Guided Interventional Procedures

VI270-SD-THB5 Station #5

Long-Term Outcomes of Radiofrequency Ablation for Locally Recurrent Papillary Thyroid Cancer

VI269-SD-THB4 Station #4

MRI and US Volume Measurement Differences May Predict Success of Prostate Fusion Biopsy

VI273-SD-THB8 Station #8

Superman X-Ray Vision Smart Glasses Guidance for Percutaneous Biopsy and Ablation

VI266-SD-THB1. Station #1

The Availability of Interventional Radiology Rotations at Medical Schools in the United States

VI267-SD-THB2. Station #2

The Predictor of Pulmonary Artery Pressure Improvement of Balloon Pulmonary Angioplasty for Chronic Thromboembolic Pulmonary Hypertension: Initial Experience of the CT Voronoi Diagram-based Lung Volume Measurements

VI268-SD-THB3 Station #3

Utility of Change in Volumetric ADC and Enhancement Post TACE in Predicting Histologic Grade of HCC with Pathologic Correlation

VI271-SD-THB6. Station #6**12:45–1:15 PM****Education Exhibits**

Contrast Enhanced Magnetic Resonance Lymphangiography for Various Thoracoabdominal Lymphatic Diseases

VI174-ED-THB10 Station #10

Need-To-Know Things About Interventional Procedures Related to Portal Venous System

VI173-ED-THB9 Station #9

Education Exhibits

SPACE NO.	EXHIBIT TITLE
VI001-EB-X	Percutaneous Skull Biopsy - Why the Interventional Radiologist Shouldn't Avoid
VI001-EB-X	Percutaneous Skull Biopsy - Why the Interventional Radiologist Shouldn't Avoid
VI002-EB-X	Percutaneous Sclerotherapy of a Retro-Orbital Venous Malformation: A Safe Multi-Disciplinary Approach
VI002-EB-X	Percutaneous Sclerotherapy of a Retro-Orbital Venous Malformation: A Safe Multi-Disciplinary Approach
VI003-EB-X	'Name that Vein': A Review of Variant Iliac Venous Anatomy Encountered in Pelvic Venous Disease
VI003-EB-X	'Name that Vein': A Review of Variant Iliac Venous Anatomy Encountered in Pelvic Venous Disease
VI004-EB-X	AngioVac Percutaneous Aspiration Thrombectomy: Basic to Advanced Techniques
VI004-EB-X	AngioVac Percutaneous Aspiration Thrombectomy: Basic to Advanced Techniques
VI005-EB-X	Rebuild the Infrastructure: Imaging and Intervention for Vascular Complications of Pancreatitis - From Evaluation, Management, to Techniques
VI005-EB-X	Rebuild the Infrastructure: Imaging and Intervention for Vascular Complications of Pancreatitis - From Evaluation, Management, to Techniques
VI100-ED-X	Interactive 3D Volume Rendering of Cervical Paragangliomas: Current Applications in Vascular Surgery
VI100-ED-X	Interactive 3D Volume Rendering of Cervical Paragangliomas: Current Applications in Vascular Surgery
VI101-ED-X	The Evolution of Acute Ischemic Stroke Treatment
VI101-ED-X	The Evolution of Acute Ischemic Stroke Treatment
VI102-ED-X	The Modern Neuro IR Suite: Tools and Armamentarium

VI102-ED-X	The Modern Neuro IR Suite: Tools and Armamentarium
VI103-ED-X	Maximizing Procedural Success! A Trainee's Guide to Imaging Equipment in the IR Suite
VI103-ED-X	Maximizing Procedural Success! A Trainee's Guide to Imaging Equipment in the IR Suite
VI104-ED-X	Acute Non-Traumatic Aortic Conditions: A Surgical Perspective to Radiologic Interpretation
VI104-ED-X	Acute Non-Traumatic Aortic Conditions: A Surgical Perspective to Radiologic Interpretation
VI105-ED-X	Heating up the Lungs: Lung Radiofrequency Ablation in the Setting of Sarcoma Metastases
VI105-ED-X	Heating up the Lungs: Lung Radiofrequency Ablation in the Setting of Sarcoma Metastases
VI106-ED-X	4D-Flow: When and How?
VI106-ED-X	4D-Flow: When and How?
VI107-ED-X	Multidetector Computed Tomography Evaluation of Spontaneous Non-Arteriosclerotic Coronary Dissection Associated with Fibromuscular Dysplasia: Spectrum of Disease
VI107-ED-X	Multidetector Computed Tomography Evaluation of Spontaneous Non-Arteriosclerotic Coronary Dissection Associated with Fibromuscular Dysplasia: Spectrum of Disease
VI108-ED-X	Main Bile Duct Stricture by Transarterial Chemoembolization: How to Avoid It
VI108-ED-X	Main Bile Duct Stricture by Transarterial Chemoembolization: How to Avoid It
VI109-ED-X	Artificial Intelligence and Interventional Radiology: Current Status, Future Applications, and Related Controversies
VI109-ED-X	Artificial Intelligence and Interventional Radiology: Current Status, Future Applications, and Related Controversies
VI110-ED-X	A New Gold Standard? The Emerging Significance of IVUS in TIPS Procedures

VI110-ED-X	A New Gold Standard? The Emerging Significance of IVUS in TIPS Procedures
VI111-ED-X	Sonographic Evaluation of Dialysis Grafts and Arteriovenous Fistulas: Assessment of Graft Function and Locoregional Emergent Complications
VI111-ED-X	Sonographic Evaluation of Dialysis Grafts and Arteriovenous Fistulas: Assessment of Graft Function and Locoregional Emergent Complications
VI112-ED-X	Preoperative Evaluation of Autogenous Tissue Flap Reconstruction Techniques: What Radiologists Need to Know
VI112-ED-X	Preoperative Evaluation of Autogenous Tissue Flap Reconstruction Techniques: What Radiologists Need to Know
VI113-ED-X	The Adamkiewicz Artery: Tips and Tricks in Optimizing Computed Tomography Angiography with an Emphasis on Image Reconstruction Technique
VI113-ED-X	The Adamkiewicz Artery: Tips and Tricks in Optimizing Computed Tomography Angiography with an Emphasis on Image Reconstruction Technique
VI114-ED-X	Review of Post-EVAR Endoleak Diagnosis and Angiographic Review of Management Options
VI114-ED-X	Review of Post-EVAR Endoleak Diagnosis and Angiographic Review of Management Options
VI115-ED-X	Reflections of the Heart: Spectral Doppler Abnormalities Indicative of Occult Cardiovascular Disease
VI115-ED-X	Reflections of the Heart: Spectral Doppler Abnormalities Indicative of Occult Cardiovascular Disease
VI116-ED-X	The What, How, and Why of Immediate Post Y-90 Imaging
VI116-ED-X	The What, How, and Why of Immediate Post Y-90 Imaging
VI117-ED-X	Diagnosis and Management of Complications Related to Endovascular Interventions of Arterio-Venous Dialysis Access (AVF/AVG) Dysfunctions: Lessons Learned from Morbidity and Mortality Rounds of More than 15 Years

- VI117-ED-X** Diagnosis and Management of Complications Related to Endovascular Interventions of Arterio-Venous Dialysis Access (AVF/AVG) Dysfunctions: Lessons Learned from Morbidity and Mortality Rounds of More than 15 Years
- VI118-ED-X** You Scream, I Scream, We All Scream for Cone Beam: A Review of Cone Beam Computed Tomography Imaging in Interventional Radiology Procedures and Utility over Conventional Fluoroscopy Alone
- VI118-ED-X** You Scream, I Scream, We All Scream for Cone Beam: A Review of Cone Beam Computed Tomography Imaging in Interventional Radiology Procedures and Utility over Conventional Fluoroscopy Alone
- VI119-ED-X** Surfing the Waveform: A Tutorial for Vascular Waveform Analysis from A to Z
- VI119-ED-X** Surfing the Waveform: A Tutorial for Vascular Waveform Analysis from A to Z
- VI120-ED-X** Seeking the Pulse: Role of CT and MRI in Diagnosis and Monitoring of Takayasu Arteritis
- VI120-ED-X** Seeking the Pulse: Role of CT and MRI in Diagnosis and Monitoring of Takayasu Arteritis
- VI121-ED-X** Visceral Aneurysms: A Case Based Review of Pathophysiology, Imaging Findings, Complications, and Treatment Options
- VI121-ED-X** Visceral Aneurysms: A Case Based Review of Pathophysiology, Imaging Findings, Complications, and Treatment Options
- VI122-ED-X** The ABC's on AVFs: Understanding Ultrasound Imaging of Arteriovenous Access for Hemodialysis
- VI122-ED-X** The ABC's on AVFs: Understanding Ultrasound Imaging of Arteriovenous Access for Hemodialysis
- VI123-ED-X** Ultrasound-Guided Percutaneous Core Needle Biopsy: When? Where? How?
- VI123-ED-X** Ultrasound-Guided Percutaneous Core Needle Biopsy: When? Where? How?

VI124-ED-X	Accessory Vein Management During Intervention of 'Failing to Mature' Arteriovenous Hemodialysis Fistula
VI124-ED-X	Accessory Vein Management During Intervention of 'Failing to Mature' Arteriovenous Hemodialysis Fistula
VI125-ED-X	The Interventional Radiologist's 'PARTO' Portal Hypertension Management: TIPS and Additional tricks
VI125-ED-X	The Interventional Radiologist's 'PARTO' Portal Hypertension Management: TIPS and Additional tricks
VI126-ED-X	How to Optimize Scans for CT Angiography of Entire Aorta
VI126-ED-X	How to Optimize Scans for CT Angiography of Entire Aorta
VI127-ED-X	Failure to Mature: Diagnosing Early Arteriovenous Fistula Failure and Percutaneous Interventions for Associated Lesions
VI127-ED-X	Failure to Mature: Diagnosing Early Arteriovenous Fistula Failure and Percutaneous Interventions for Associated Lesions
VI128-ED-X	CT Angiography Acquisition Timing: Advantages and Disadvantages of Clinical Options
VI128-ED-X	CT Angiography Acquisition Timing: Advantages and Disadvantages of Clinical Options
VI129-ED-X	Complications Mimics in the Post-Surgical Aorta
VI129-ED-X	Complications Mimics in the Post-Surgical Aorta
VI130-ED-X	Hemorrhagic Complications of Pancreatitis: The Role of Multidetector CT and Interventional Radiology
VI130-ED-X	Hemorrhagic Complications of Pancreatitis: The Role of Multidetector CT and Interventional Radiology
VI131-ED-X	The Emerging Role of Contrast-Enhanced Ultrasound in Oncological Intervention
VI131-ED-X	The Emerging Role of Contrast-Enhanced Ultrasound in Oncological Intervention

VI132-ED-X	Transjugular Intrahepatic Portosystemic Shunt (TIPS) in Budd-Chiari Syndrome (BCS): Unique Challenges and Considerations
VI132-ED-X	Transjugular Intrahepatic Portosystemic Shunt (TIPS) in Budd-Chiari Syndrome (BCS): Unique Challenges and Considerations
VI133-ED-X	Staying in the Loop: Interventionalist's Guide to Performing Complex Below-Knee Arterial and Pedal Loop Revascularization
VI133-ED-X	Staying in the Loop: Interventionalist's Guide to Performing Complex Below-Knee Arterial and Pedal Loop Revascularization
VI134-ED-X	Splenic Arterial Interventions: An "Ex-Spleen-Ation" of Indications, Techniques, and Outcomes
VI134-ED-X	Splenic Arterial Interventions: An "Ex-Spleen-Ation" of Indications, Techniques, and Outcomes
VI135-ED-X	Aortitis: The Angry Aorta
VI135-ED-X	Aortitis: The Angry Aorta
VI136-ED-X	Contrast-Enhanced Ultrasound in Vascular Anomalies: A New Paradigm
VI136-ED-X	Contrast-Enhanced Ultrasound in Vascular Anomalies: A New Paradigm
VI137-ED-X	Percutaneous Endoscopic Retrieval of Dropped Intraperitoneal Stones: A Minimally Invasive Alternative to Open Laparotomy
VI137-ED-X	Percutaneous Endoscopic Retrieval of Dropped Intraperitoneal Stones: A Minimally Invasive Alternative to Open Laparotomy
VI138-ED-X	Uterine Fibroid Embolization: Preparing for and Treating Post-Procedure Pain
VI138-ED-X	Uterine Fibroid Embolization: Preparing for and Treating Post-Procedure Pain
VI139-ED-X	Detection of Post-operative Complications after Thoracic and Abdominal Aortic Intervention Using 4-Dimensional Dynamic Computed Tomographic Angiography

VI139-ED-X	Detection of Post-operative Complications after Thoracic and Abdominal Aortic Intervention Using 4-Dimensional Dynamic Computed Tomographic Angiography
VI140-ED-X	Including the Excluded Segment: Indications, Tips, and Tricks for G-Tube Placement in the Gastric Remnant after Roux-en-Y Gastric Bypass
VI140-ED-X	Including the Excluded Segment: Indications, Tips, and Tricks for G-Tube Placement in the Gastric Remnant after Roux-en-Y Gastric Bypass
VI141-ED-X	Engaging Medical Students in Interventional Radiology: In the Era of the New Integrated IR Residency
VI141-ED-X	Engaging Medical Students in Interventional Radiology: In the Era of the New Integrated IR Residency
VI142-ED-X	Augmented Reality Systems for Surgical and Image Guided Interventions
VI142-ED-X	Augmented Reality Systems for Surgical and Image Guided Interventions
VI143-ED-X	Hidden Depths: The Added Value of SPECT/CT Over Planar and SPECT Imaging Alone in the Work-Up for Selective Internal Radiation Therapy (SIRT) for Inoperable Liver Tumors
VI143-ED-X	Hidden Depths: The Added Value of SPECT/CT Over Planar and SPECT Imaging Alone in the Work-Up for Selective Internal Radiation Therapy (SIRT) for Inoperable Liver Tumors
VI144-ED-X	EVAR Endoleaks: Emerging Techniques Highlighting the Use of Contrast-Ultrasound
VI144-ED-X	EVAR Endoleaks: Emerging Techniques Highlighting the Use of Contrast-Ultrasound
VI145-ED-X	Important Extracranial-Intracranial Vascular Anastomosis and Its Implications on Extracranial Endovascular Procedures
VI145-ED-X	Important Extracranial-Intracranial Vascular Anastomosis and Its Implications on Extracranial Endovascular Procedures

VI146-ED-X	Infected (Mycotic) Aortic Aneurysms - Imaging Spectrum and Management
VI146-ED-X	Infected (Mycotic) Aortic Aneurysms - Imaging Spectrum and Management
VI147-ED-X	Can Metal Artifact Reduction Improve the Conspicuity of Interventional Needle Placement?
VI147-ED-X	Can Metal Artifact Reduction Improve the Conspicuity of Interventional Needle Placement?
VI148-ED-X	Automated Tumor-Feeder Detection Software (ATDS) Using CT During Arteriography in Transarterial Embolization
VI148-ED-X	Automated Tumor-Feeder Detection Software (ATDS) Using CT During Arteriography in Transarterial Embolization
VI149-ED-X	Magnetic Resonance Lymphangiography with Dynamic Study: A New Approach
VI149-ED-X	Magnetic Resonance Lymphangiography with Dynamic Study: A New Approach
VI150-ED-X	New Embolization Guidance Technology in the Angiography Room: Clarification of Feeder Vessels Just a Few Clicks Away
VI150-ED-X	New Embolization Guidance Technology in the Angiography Room: Clarification of Feeder Vessels Just a Few Clicks Away
VI157-ED-X	Pre and Post-Surgical Assessment of the Acute Aortic Syndrome: What the Surgeon Wants to Know
VI157-ED-X	Pre and Post-Surgical Assessment of the Acute Aortic Syndrome: What the Surgeon Wants to Know



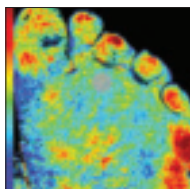
The Leader in Hyperspectral
Imaging for Tissue Oximetry

HyperView™



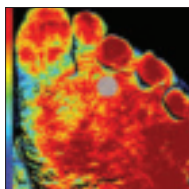
WOUND CARE • RECONSTRUCTIVE SURGERY • VASCULAR INTERVENTION

Oxy Pre-op



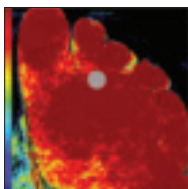
OxyHb Level = **44**

Oxy Post-op



OxyHb Level = **78**

Oxy Post-op +133 min



OxyHb Level = **111**

Establishing a New
Standard of Care

Visit Us At Booth #1253